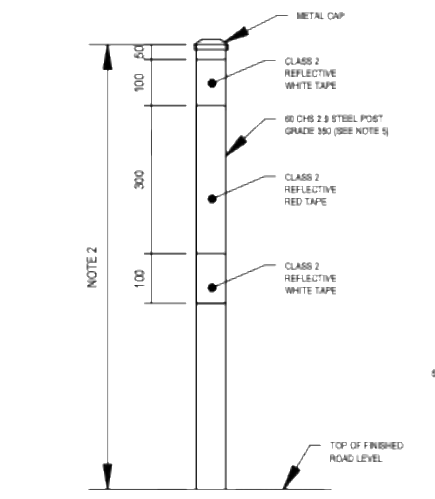
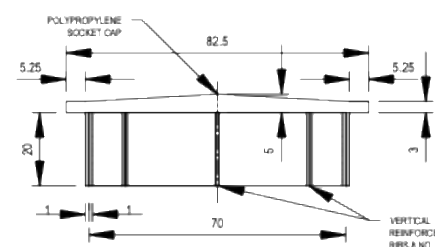


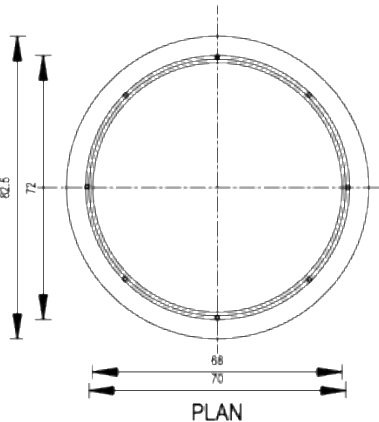
INSTALLATION OF SIGNPOSTS



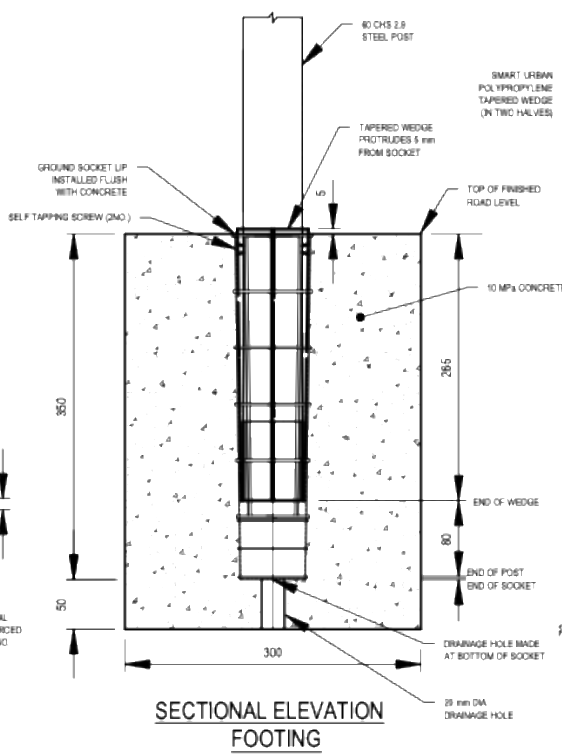
**BOLLARD**



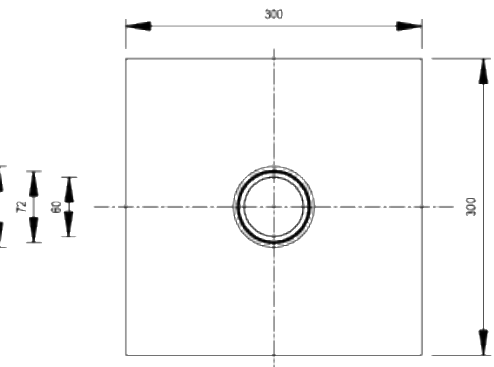
**ELEVATION SOCKET CAP**



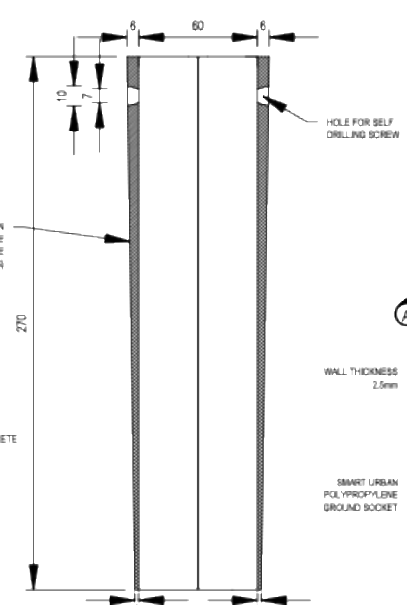
**PLAN**



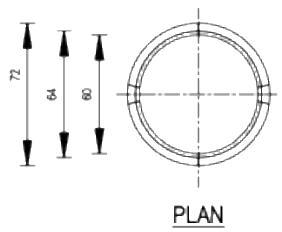
**SECTIONAL ELEVATION FOOTING**



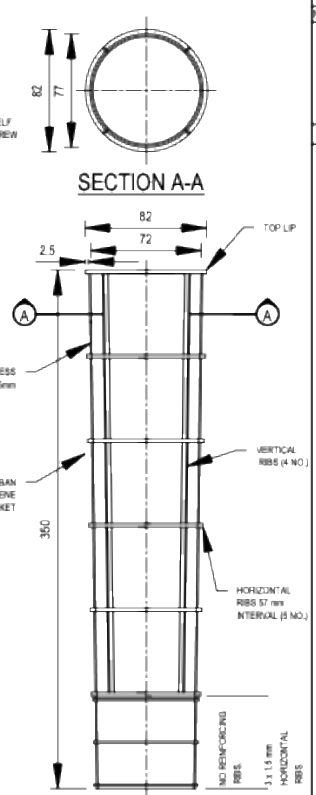
**PLAN (SEE NOTE 8)**



**SECTIONAL ELEVATION WEDGE (SMART URBAN TYPE)**



**PLAN**



**ELEVATION SOCKET (SMART URBAN TYPE)**

**AMENDMENTS**

NO.	DESCRIPTION	APPROVED & DATE
2.	29mm DIA DRAINAGE HOLE ADDED CHANGE AUSTPOSTS TO SMART URBAN AMENDED.	T. FREEMAN 06/09/14
3.	TITLE BLOCK AND FONT UPDATED. MOVED NOTES TO TITLEBLOCK.	06/04/2015

**NOTES**

- SMART URBAN REMOVABLE BOLLARDS TO BE INSTALLED TO MANUFACTURERS SPECIFICATIONS AND THIS DRAWING.
- HEIGHT OF BOLLARD TO BE 600 mm ABOVE FINISHED ROAD LEVEL UNLESS OTHERWISE SPECIFIED IN THE DESIGN DRAWINGS.
- THE SPACING OF BOLLARDS SHOULD BE IN ACCORDANCE WITH THE DESIGN DRAWINGS.
- THE SOCKETS SHOULD BE CAPPED WHEN NOT USED.
- BOLLARDS AND METAL CAPS SHALL BE COVERED WITH EXTERIOR GRADE LEAD FREE POLYESTER POWDER COAT.
- THE FINISHED COLOUR AND SPECULAR GLOSS VALUE SHALL BE EQUIVALENT TO GOLDEN YELLOW Y14 AS SPECIFIED IN ACS200.
- ALL DIMENSIONS IN MILLIMETERS.
- AS AN ALTERNATIVE TO THE 300X300X404 mm DEEP CONCRETE FOOTING, THE FOOTING MAY BE BORED USING A 300 mm DIA. AUGER TO GIVE CYLINDRICAL 400 mm DEEP FOOTING.

3

3

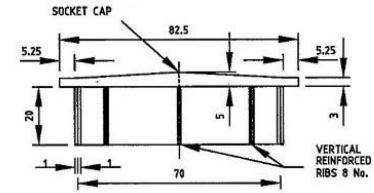
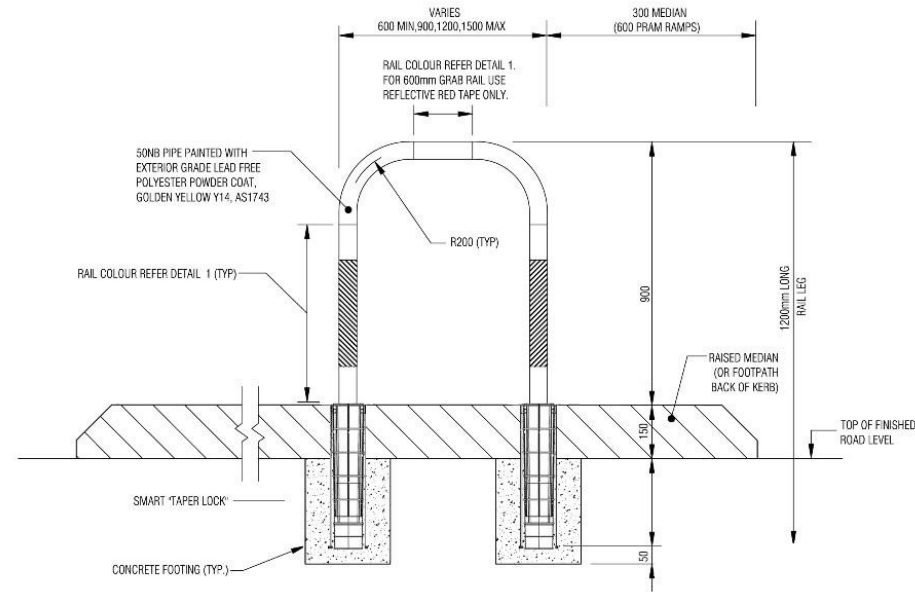
**mainroads**  
 PLANNING AND TECHNICAL SERVICES DIRECTORATE  
 ROAD AND TRAFFIC ENGINEERING BRANCH  
 Website: [www.mainroads.wa.gov.au](http://www.mainroads.wa.gov.au) EAST PERTH 6004  
 Telephone: 08 9437 1344

DESIGNED	SOORI K. KASIRI	29/04/14
DRAWN	SOORI K. KASIRI	29/04/14
CHECKED	D. LANDMARK	26/06/08
APPROVED	R. GROVE	26/06/08
FILE NO.	13/4330	

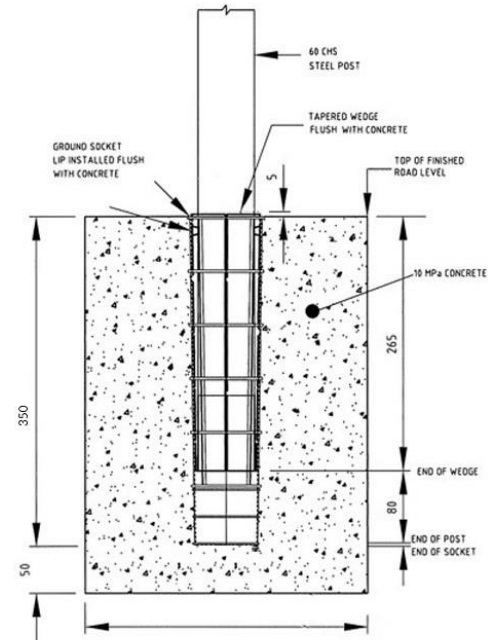
STANDARD DRAWING  
 REMOVABLE BOLLARDS  
 FOR USE ON ROADS UP TO 110 km/h

200831-0014-3

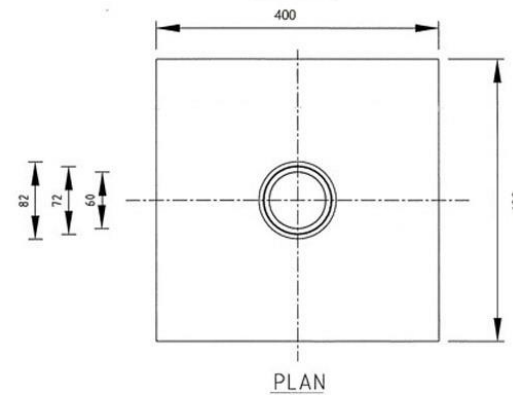
**INSTALLATION OF TRAFFIC BOLLARDS**



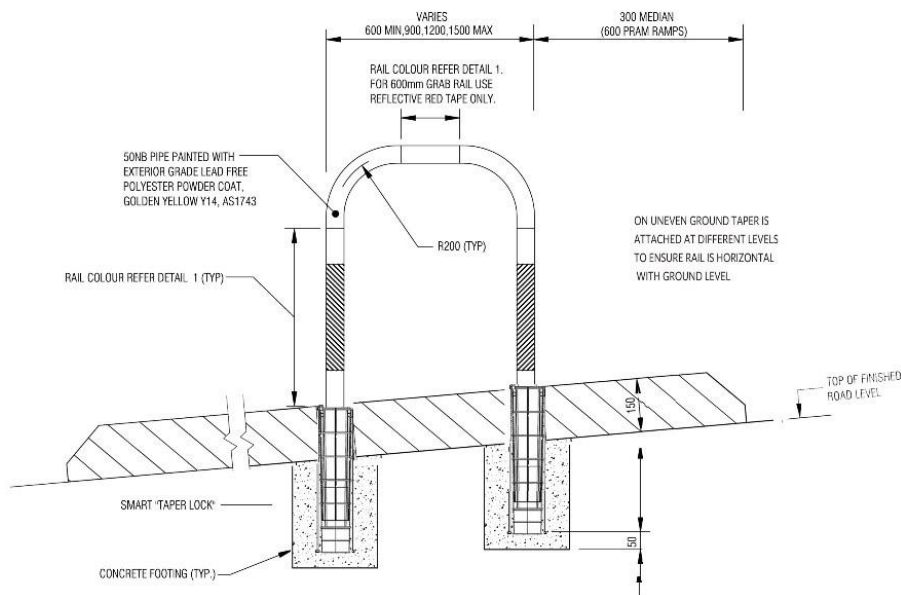
ELEVATION  
SOCKET CAP



SECTIONAL ELEVATION  
FOOTING



INSTALLATION OF GRABRAILS



PEDESTRIAN GRAB RAIL