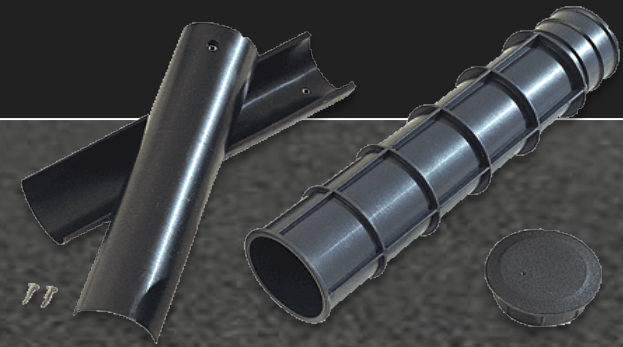


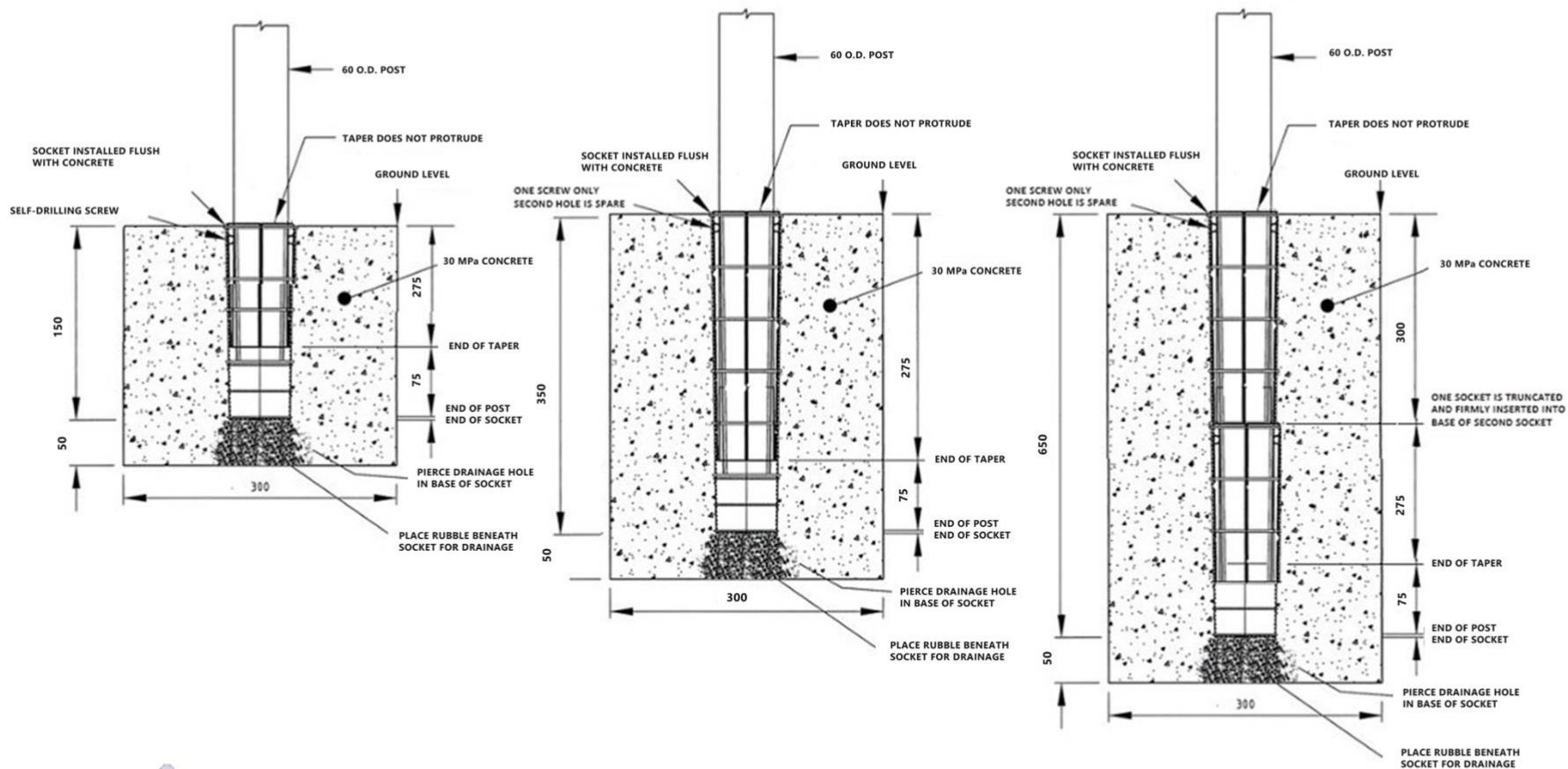
zero waste

UNBREAKABLE FOUNDATIONS



INSTALLATION INSTRUCTIONS

Please read carefully- if installed correctly there will be absolutely ZERO damage to the concrete footing or surrounding paving impact after impact, and no more digging or heavy labour for the entire lifespan of a development.



NOTES

1. Concrete must be 30 MPa + to be impact resistant.
2. NB: Rapid set is not impact resistant (grout is too flexible).
3. Install socket flush with ground level
4. Socket must be surrounded by min 30 mm of concrete on all sides.
5. If foundation is disturbed-, simply add a little more concrete to stabilise.

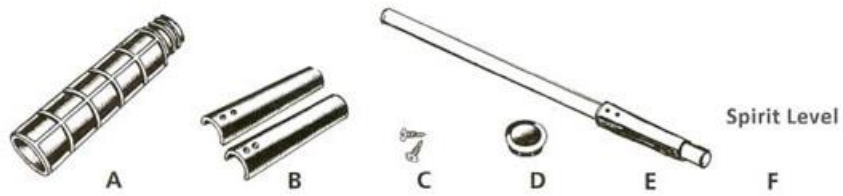
You should NEVER dig up or throw away a ZERO WASTE Foundation!

Approved by MRWA/ Western Power/ Dept Transport/ DOH&S



INSTALLING ZERO WASTE FOUNDATIONS

ZERO WASTE Foundations can be used to install any size or weight item from signposts, to barriers, bollards and street furniture, statues, fencing, tables, seating- the possible applications are almost limitless.



(A) Ground Socket (B) Self-locking Taper (C) Screws (D) Cap (E) Installation Tool (F) Spirit Level (G) Concrete (H) Paving

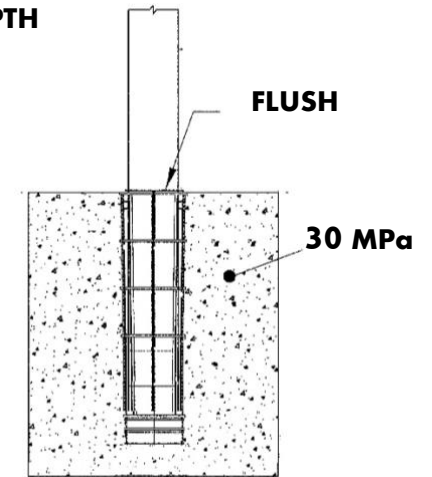
IMPORTANT

1. Ground socket must be flush with ground level
2. Rapid set is NOT impact resistant (To be impact resistant concrete must be 30 MPa or greater)
3. Concrete footing must be large enough to ensure it is not dislodged when item is impacted- refer to local guidelines as conditions differ from region to region.
4. Paving is NOT impact resistant- so you must use a min of 150 mm concrete on all sides of ground socket.
5. If you want drainage- pierce hole in base of socket (weak spot provided) and place rubble beneath socket.
6. When you remove item or tool, insert cap to prevent ingress of water, concrete and grit.

SOCKET INSTALLED FROM 150 MM DEPTH

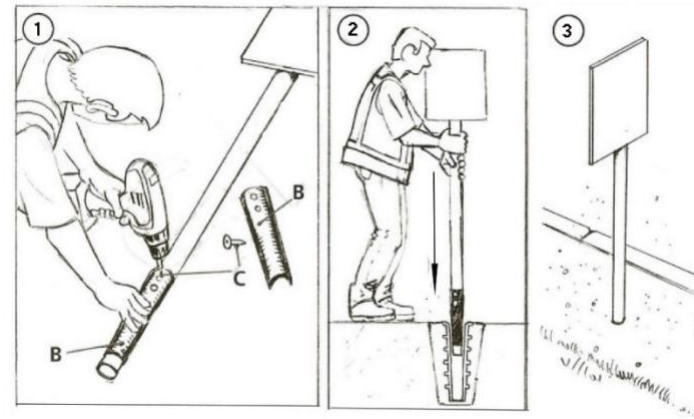
You can extend depth by truncating one socket and placing firmly inside the open end of a complete ground socket to extend depth by 300 mm increments.

Socket can be reduced to 150 mm depth for installation in solid concrete pavements by removing base and reinserting upside down into open end of truncated socket, creating tight fit (can use glue to reinforce).



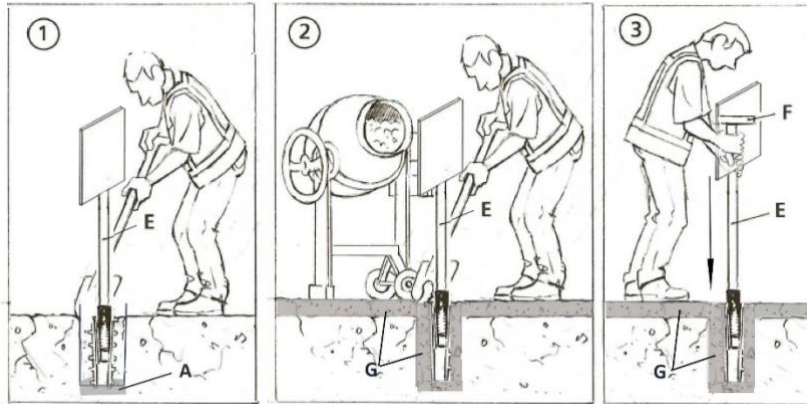
TAPER MUST BE ATTACHED

Attach Taper to post using self-drilling screws provided (only one screw per half taper- second hole is spare). Taper must be attached, or items will NOT be removable using tools. If using posts 2.9 wall thickness or greater you might want to pre-drill



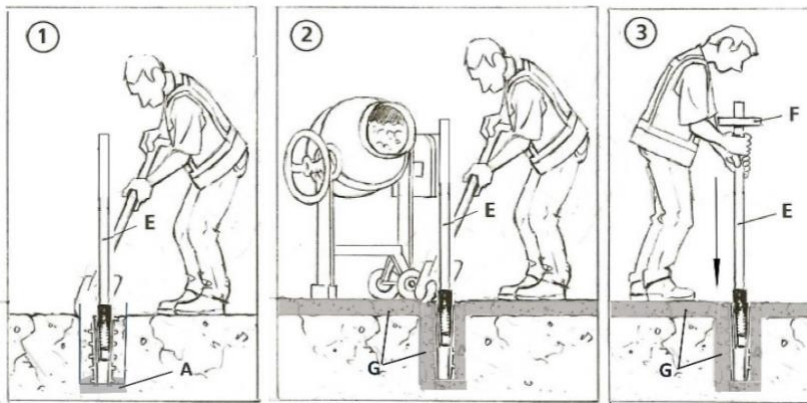
INSTALLING GROUND SOCKET

Insert item gently into ground socket, position socket upright in hole and pour concrete. Check alignment before concrete cures.

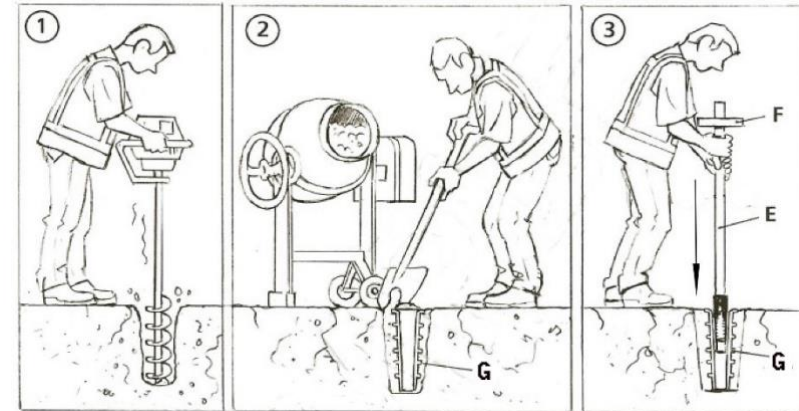


USING INSTALLATION TOOL

When installing large items; in strong winds; when items are not ready to install; or when you do not have time to wait for concrete to cure, you can use installation tool to position socket upright in hole and fill with concrete. Check alignment, twist tool to remove and cap off until concrete cures.



Core drill hole 80 + mm diameter. Place rubble beneath socket and a little concrete. Use installation tool to position socket upright in hole and fill hole with concrete flush with ground level. Check alignment, twist tool to remove and cap off clean off surface (sign your name) and wait until concrete cures.



(A) Rubble (B) Taper (C) Self-drilling screws (D) Dave the Installer (E) Item/ Installation Tool (F) Spirit Level (G) Concrete 30 MPa

CONTACT US FOR MORE DETAILS

Visit web site to view videos and specifications. It is a good idea to make new installers view this video to avoid problems.

[VIEW VIDEO](#)

08 9248 5545
hello@zerocivil.com
zerocivil.com